

**Black Eagle Communication Site**

**Overview**

The site is located on a previously graded and benched plateau within the Black Eagle Mine in the Eagle Mountains, approximately 14 miles northwest of Desert Center. The proposed project will place a tower and equipment shelter at the site.

**Table 1: Black Eagle Communication Site**

Latitude <sup>1</sup>	Longitude <sup>1</sup>	Elev <sup>2</sup>	Address	T/R/S <sup>3</sup>	APN <sup>4</sup>	USGS Quadrangle
33°52'33.2"	115°31'57.1"	1,668	25913 Kaiser Road, Desert Center, CA 92239	3S 14E Sec. 29 (Projected)	701-370- 008	Placer Canyon
1 – All coordinates utilize NAD83 datum 2 – All elevations in feet above mean sea level 3 – Township/Range/Section (San Bernardino Base Meridian)				4 – All Assessors Parcel Numbers are located in Riverside County, unless noted: OC = Orange County; SD = San Diego County; SB = San Bernardino County		

**Surrounding Land Uses**

The site lies within the Kaiser Corporation’s Black Eagle Mine. Though the mine has not been technically operational since the 1980s, the Kaiser Corporation retains a management presence at the mine in anticipation of restarting operations at some point in the future. The entire area surrounding the site has been subjected to heavy open pit mining activities that lasted for several decades. There are no homes within the area.

**Topography and Vegetation**

The topography of the area is mountainous and broken. The surrounding area has been heavily impacted by open pit mining for iron ore. The open pit mine measures approximately 1.50 miles in length and over 0.50 mile in width. The landscape has been blasted, benched, and graded, with a significant amount of material hauled away for processing. The proposed tower site was formerly used as a staging and parking area for mining-related activities, and is composed of a gravel pad sitting atop a graded bench that is largely devoid of vegetation. Scattered vegetation around the perimeter of the site includes creosote, white sage, and isolated plants and shrubs.

**Land Ownership and Applicable Habitat/Land Management Plan**

The site is privately owned by the Kaiser Corporation. It is not subject to any land or habitat management plan.

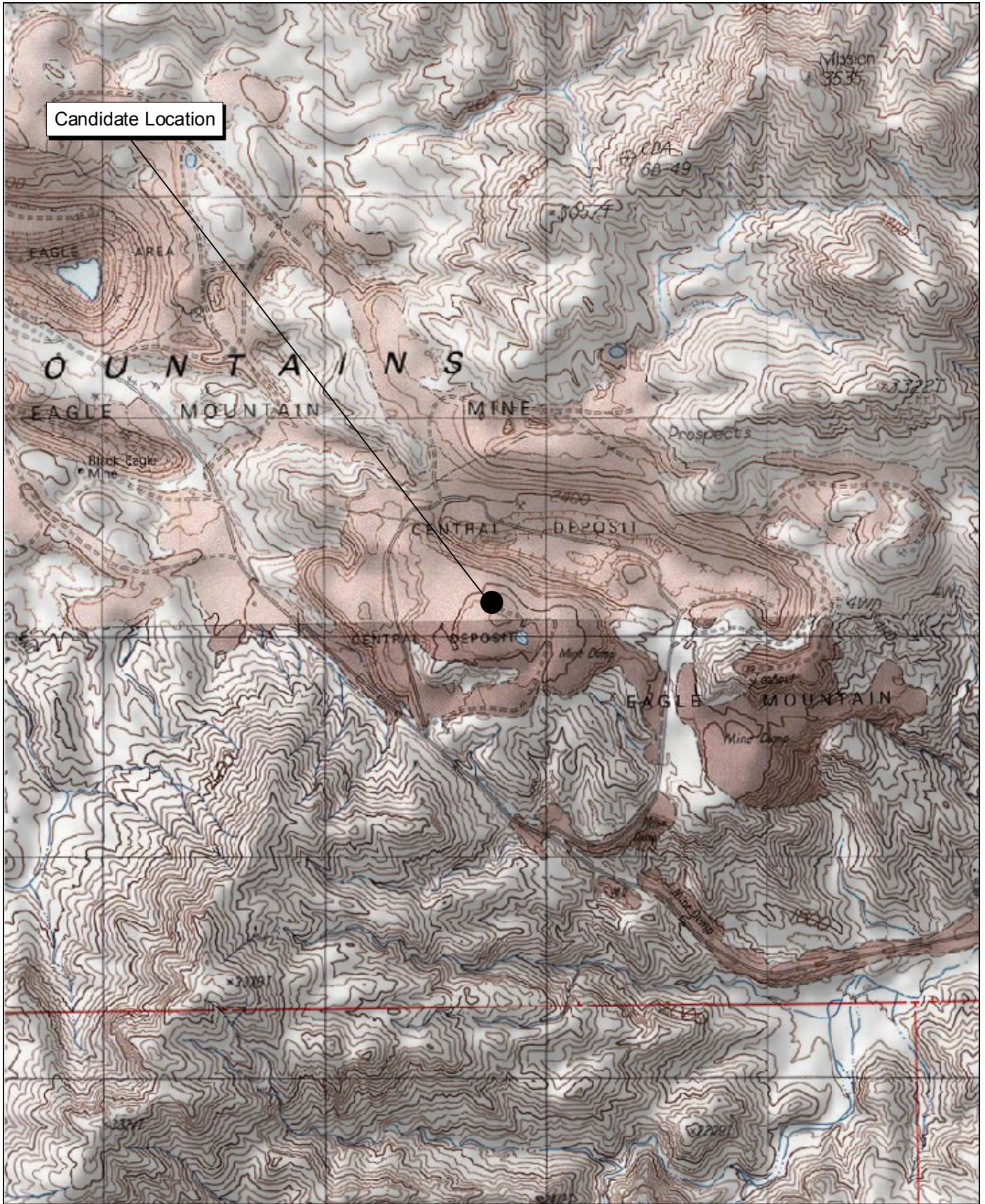
**Road Access**

A dirt road formerly used for mining operations provides access the site.

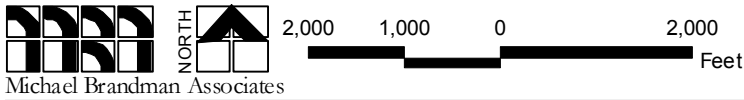
**Commercial Power Access**

The nearest available commercial power to the site is located at the Kaiser facility approximately 5 miles from the project site. Power will presumably be brought to the site using a pole line installed along existing mining roads.



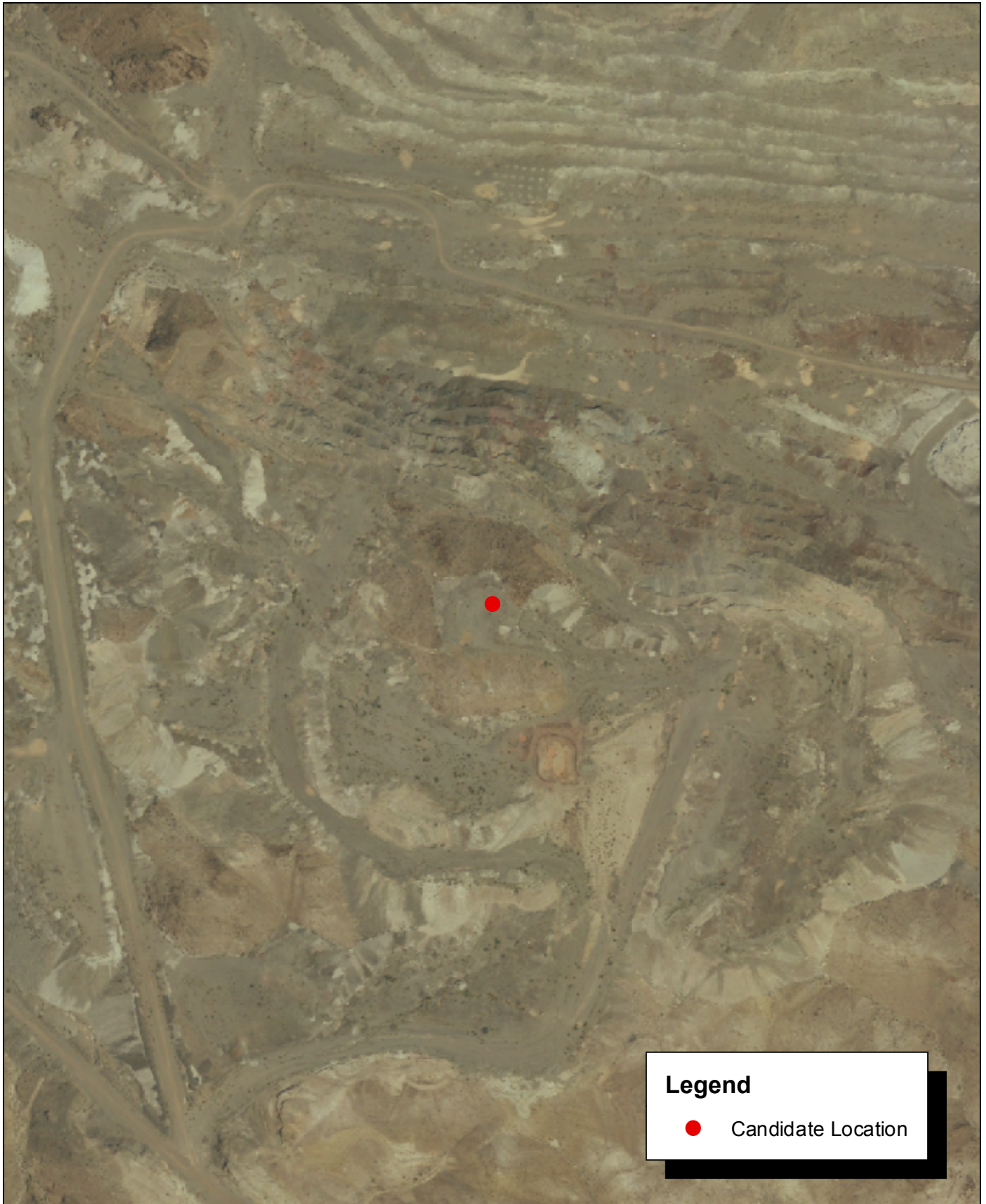


Source: USGS Placer Canyon 7.5' Topographic Map.

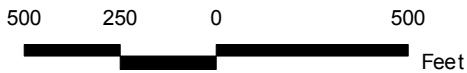


# Black Eagle Communication Site Local Vicinity Topographic Map





Source: Riverside County NAIP, 2005.



# Black Eagle Communication Site Local Vicinity Aerial Map



Photograph 1: View toward Black Eagle candidate location, facing north.



Photograph 2: View toward Black Eagle candidate location, facing northwest.



Photograph 3: View toward Black Eagle candidate location, facing north-northeast.



Photograph 4: View toward Black Eagle candidate location, facing south.

Source: Michael Brandman Associates, 2008.



Michael Brandman Associates

27490003 • 02/2008 | Black Eagle\_Photo1.doc

Black Eagle Candidate Photographs 1 to 4  
PSEC Project





Photograph 5: View from Black Eagle candidate location, facing northwest.



Photograph 6: View from Black Eagle candidate location, facing east-northeast.



Photograph 7: View from Black Eagle candidate location, facing south.

Source: Michael Brandman Associates, 2008.



Michael Brandman Associates

27490003 • 02/2008 | Black Eagle\_Photo2.doc

Black Eagle Candidate Photographs 5 to 7  
PSEC Project